

MANUAL OPERATED LINEAR ACTUATORS MAH

DESCRIPTION

The ADCATrol MAH is a series of manual linear actuators with top mounted handwheel designed for use with modulating and shut off valves. These actuators are particularly interesting for control applications where a precise manual adjustment of flow is required. These actuators can also be quickly assembled to control valves allowing processes to continue operation while the original actuator is being serviced or replaced.

MAIN FEATURES

Compact and simple to install.

Strokes up to 60 mm.

Operating temperature range from -20 °C to 100 °C.

Locking mechanism to lock the valve stem in place and prevent accidental or unauthorized operation.

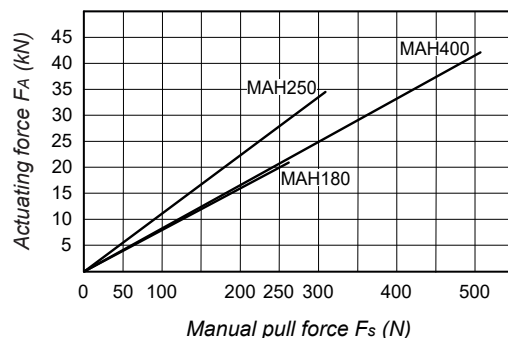
OPTIONS: Stainless steel construction.

USE: Actuation of ADCATrol control valves, or others on request.

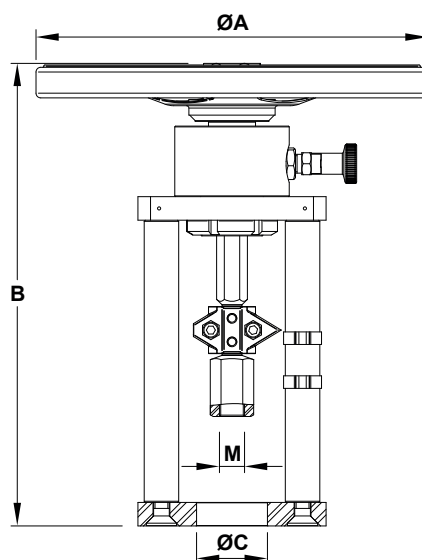
AVAILABLE
MODELS: MAH180, MAH250 and MAH400.



ACTUATOR FORCE AND MANUAL FORCE RELATIONSHIP



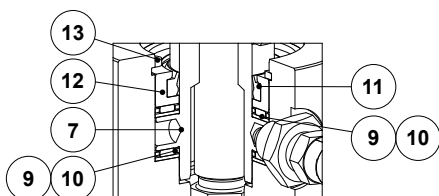
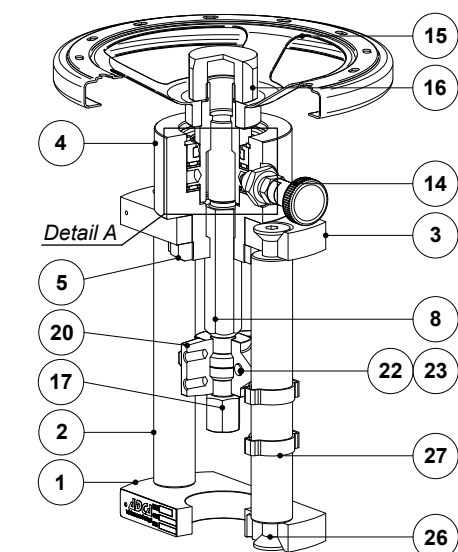
TECHNICAL DATA			
ACTUATOR MODEL	MAH180	MAH250	MAH400
Handwheel diameter (mm)	180	250	400
Rated stroke (mm)	30	30	60
Maximum force (kN)	20	33,5	41,5
Required manual pull force (N)	250	300	500



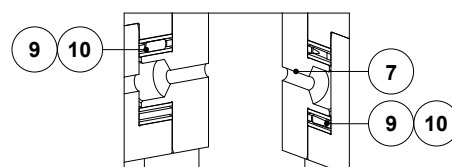
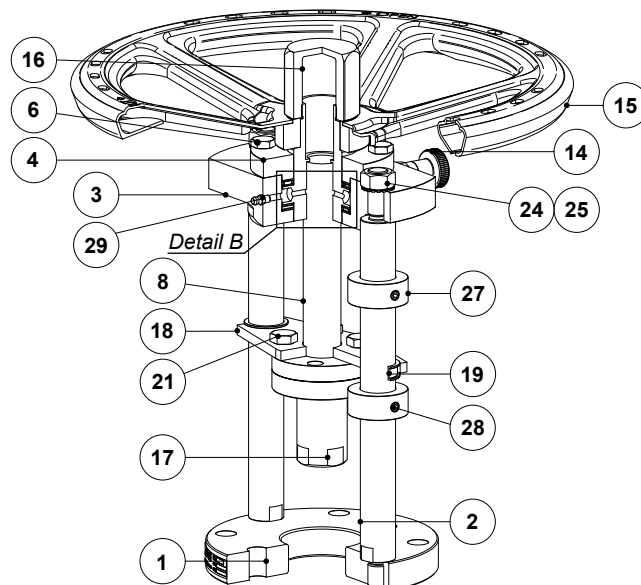
DIMENSIONS (mm)					
MODEL	ØA	B	ØC	M *	WEIGHT (kg)
MAH180	180	260	40,5 / 45	M10x1	4,8
MAH250	250	295	45 / 65	M16x1,5	5,3
MAH400	400	428	65 / 80	M16x1,5 / M27x1,5	18,6

* Depending on valve stem thread. Can be coarse or fine thread. Other dimensions on request.

Remarks: Stem coupling, yoke dimensions and design may vary depending on the ADCATrol control valve model. Refer to its corresponding information sheet or consult the manufacturer.



Detail A



Detail B

MATERIALS

POS. No.	DESIGNATION	MATERIAL	POS. No.	DESIGNATION	MATERIAL
1	Lower actuator flange	AISI304 / 1.4301; S235 JRG2 / 1.0038	16	Top cap	C45E / 1.1191
2	Yoke column	C45E / 1.1191	17	Adaptor	Steel
3	Upper actuator flange	AISI304 / 1.4301; C45E / 1.1191	18	Bracket	AISI 304 / 1.4301
4	Body	C45E / 1.1191	19	Guide	Plastic
5	Lock nut	A351 CF8 / 1.4308	20	Coupling / Travel indicator	A351 CF8 / 1.4308
6	Bolt	Zinc plated steel	21	Bolt	Zinc plated steel
7	Stem nut	Stainless steel	22	Bolt	Zinc plated steel
8	Actuator stem	Stainless steel	23	Nut	Zinc plated steel
9	* Axial bearing	Steel	24	Nut	Zinc plated steel
10	* Washer	Steel	25	Washer	Zinc plated steel
11	* Scraper ring	NBR	26	Bolt	Zinc plated steel
12	Spacer ring	AISI 304 / 1.4301	27	Crimp clamp / Adjusting ring	Steel
13	* Retaining ring	Steel	28	Socket screw	Stainless steel A2
14	Locking pin	Steel	29	Nipple	Zinc plated steel
15	Handwheel	Steel			

* Available spare parts.

ORDERING CODES MAH							
GROUP DESIGNATION	MAH	18	S	X	X	A1	
MAH – Manual operated linear actuator	MAH						
ACTUATOR MODEL							
MAH180		18					
MAH250		25					
MAH400		40					
ACTUATOR CONSTRUCTION							
Carbon steel construction (standard)			S				
Stainless steel construction (special execution)			I				
OPTIONS							
None				X			
SPECIAL FEATURES							
None					X		
YOKE DESIGN AND COUPLING							
ADCATrol VPC26, V16/2, V25/2 and V303 series (DN 15 to DN 50 – 1/2" to 2")							A1
ADCAPure V926H, V926A (1/2" to 2 1/2") and V928 series (DN 15 to DN 50)							A3
ADCATrol V16/2 series (DN 65 to DN 100 – 2 1/2" to 4")							B1
ADCATrol V25/2 and V303 series (DN 65 to DN 100 – 2 1/2" to 4")							B2
ADCAPure V926H (3" and 4") and V928 series (DN 65 to DN 100)							B3
ADCATrol V25/2 series (DN 125 to DN 150 – 5" to 6")							C2
ADCATrol V25/2 series (DN 200 – 8")							D2
Other ADCATrol valves (a)							XX
SPECIAL CONSTRUCTION / ADDITIONAL OPTIONS							
A full description must be provided and validated in case of a non-standard construction							E

(a) Exact model and size must be specified – consult the manufacturer.